



Protecting
Your Data™

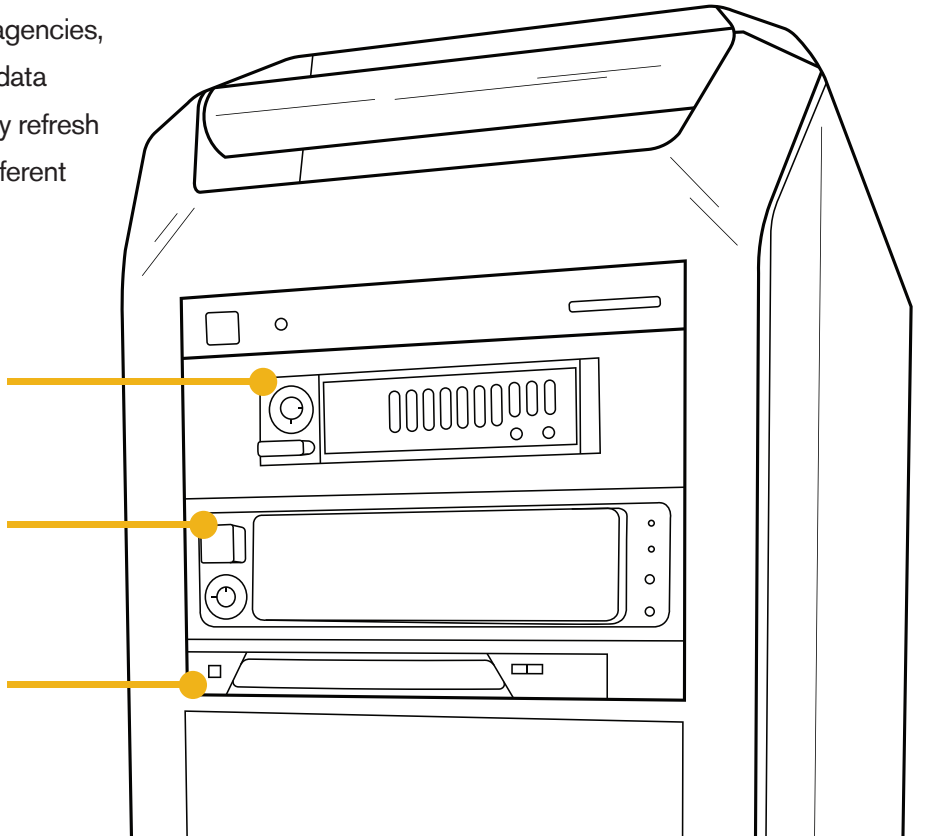
A CRU removable drive for everyone

CRU removable drives are relied on by Federal agencies, military, and businesses worldwide for powerful data security and transport. We're proud to continually refresh our product line with new storage devices for different form factors and technologies.

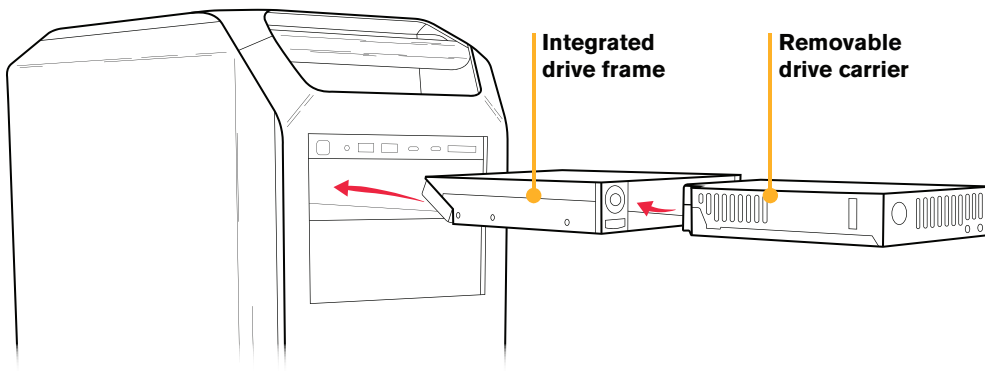
QX310
for PCIe SSDs

DX175
for short 5.25" bays

DP27
for optical bays



Three new removable drive solutions



- Carriers contain hard drives or SSDs. They offer additional drive durability and can be inserted thousands of times into the removable drive frame.
- Install the frame into a computer's drive bay. CRU offers removables for every drive bay size.



Data Express QX310

- Houses either M.2 or U.2 SSDs
- Fits 3.5" bays or 5.25" bays with an adapter
- Next generation specs



Data Express DX175

- Houses 3.5" and 2.5" drives
- Fits newer, shorter 5.25" bays



DataPort DP27

- Houses 2.5" SSDs
- Fits optical bays, replacing CD/DVD drives
- Available for laptops

For more information on CRU removable drives visit cru-inc.com, or contact us at sales@cru-inc.com or +1 (360) 816-1800.

© 2018, CRU Acquisition Group, LLC. All Rights Reserved. CRU, DataPort, and Data Express are registered trademarks of CRU Acquisition Group, LLC.